

Instruction No. 4

Installation of Trim Tab Gear Box

Items 1325 & 1326

1. If this gear box is to be installed on Ships 1-307, the short flexible shaft (Item 1502) must be removed from this gear assembly and replaced with the Trim Tab Rod (Item 1327) which is now assembled with your old gear box which you wish to replace.
2. If this gear box is to be installed on Ships 308 and up, no interchangeability problem is involved.
3. Stabilizers on Ships 1-576 do not have the hand hole for the gear box; therefore, to facilitate in the removal and installation of this item on Ships 1-576, a hand hole has been designed as explained in the attached Seabee Service News No. 17. This gear box can be installed without adding this hand hole to the Stabilizer; however, we recommend that it be installed so better lubrication of the gears and replacement of parts can be done easily

Seabee Service News

REPUBLIC AVIATION CORPORATION
FARMINGDALE, LONG ISLAND, NEW YORK
SERVICE DEPARTMENT

March 25, 1947

No. 17



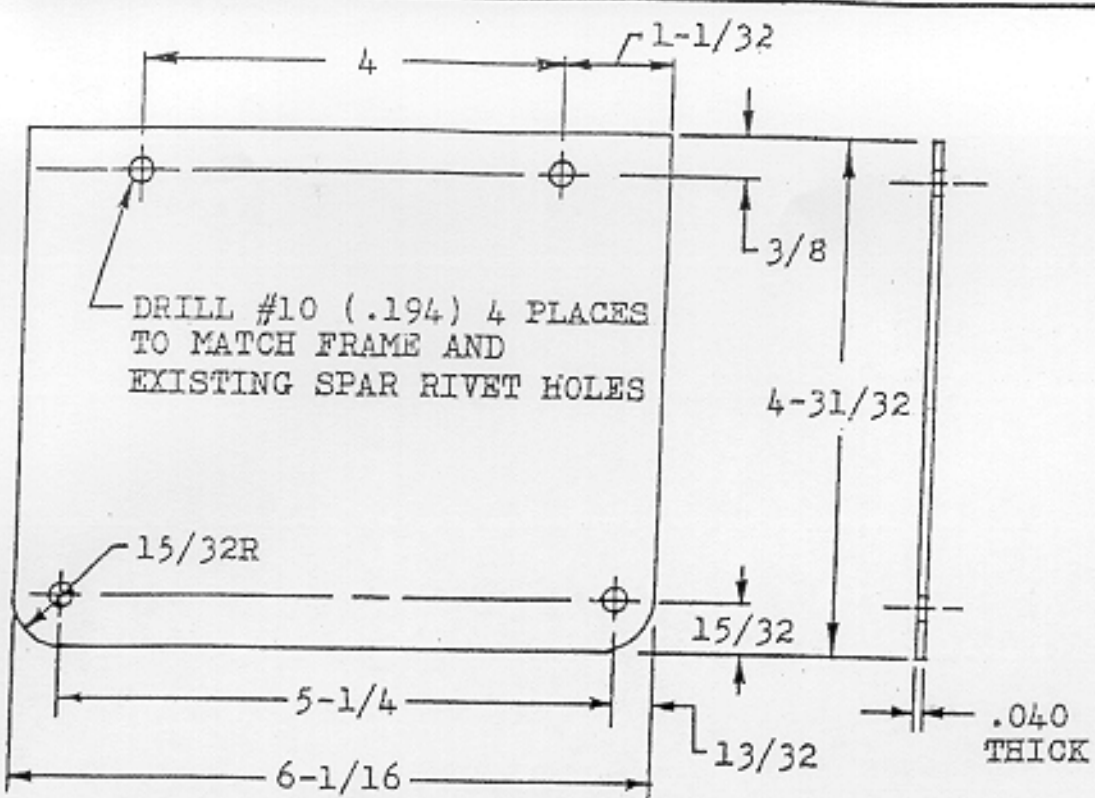
IMPROVED MEANS FOR SERVICING ELEVATOR TRIM TAB GEAR BOX

It is recommended that an access hole be added in the horizontal stabilizer for the elevator trim tab gear box on those Seabees which were delivered without this feature. Seabee Serial No. 237 thru 576 had a 1-1/4 inch diameter plug button in bottom of each horizontal stabilizer to provide access for lubrication of the trim tab gear boxes. Seabee Serial No. 577 and subsequent airplanes will have handholes in these locations so that the gear boxes may not only be lubricated but also will be readily accessible for repairs and replacement if necessary. We recommend that the large type handholes be added although we are giving below the location and material necessary for each type.

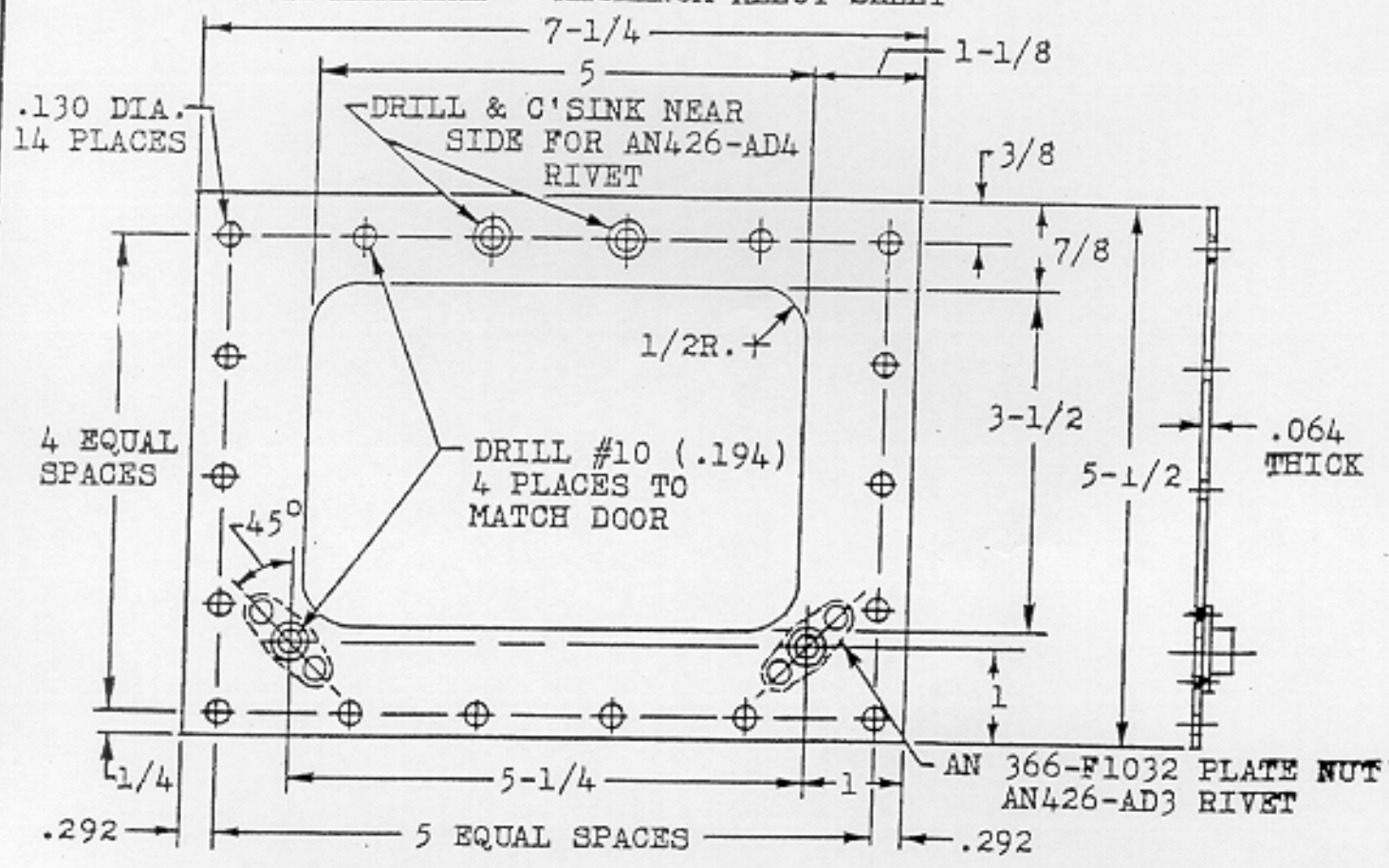
The large handholes require a door and frame for each stabilizer. These may be made in accordance with instructions on Figure 1 and installation of the frame and door may be accomplished as shown on figure 2.

Instructions for installation of the plug buttons is shown on figure 3. These plug buttons may be ordered as spares item 1379, list price three cents apiece.

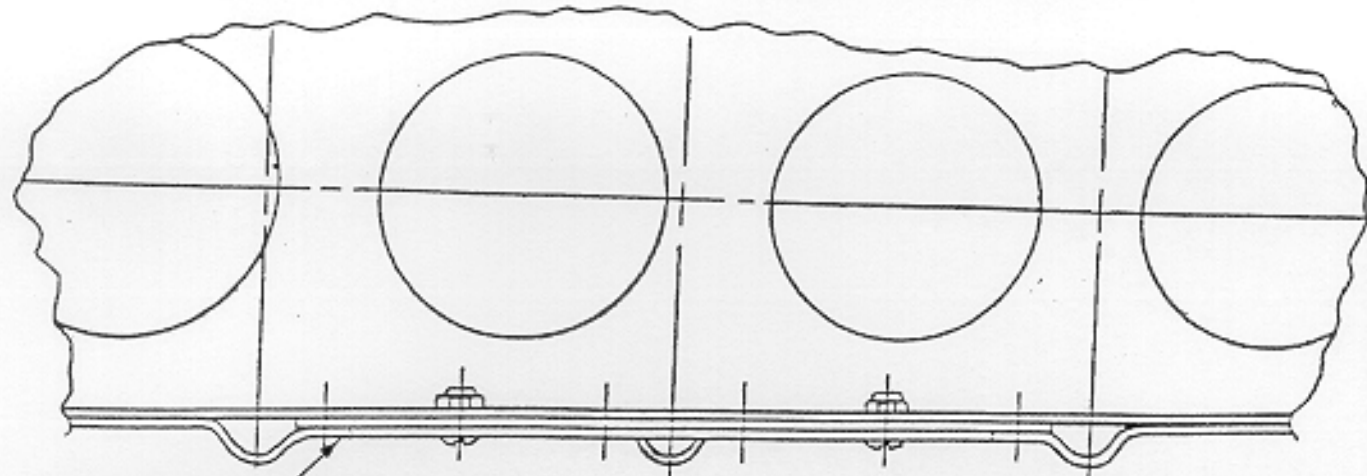
W. H. Ehmann
Service Manager



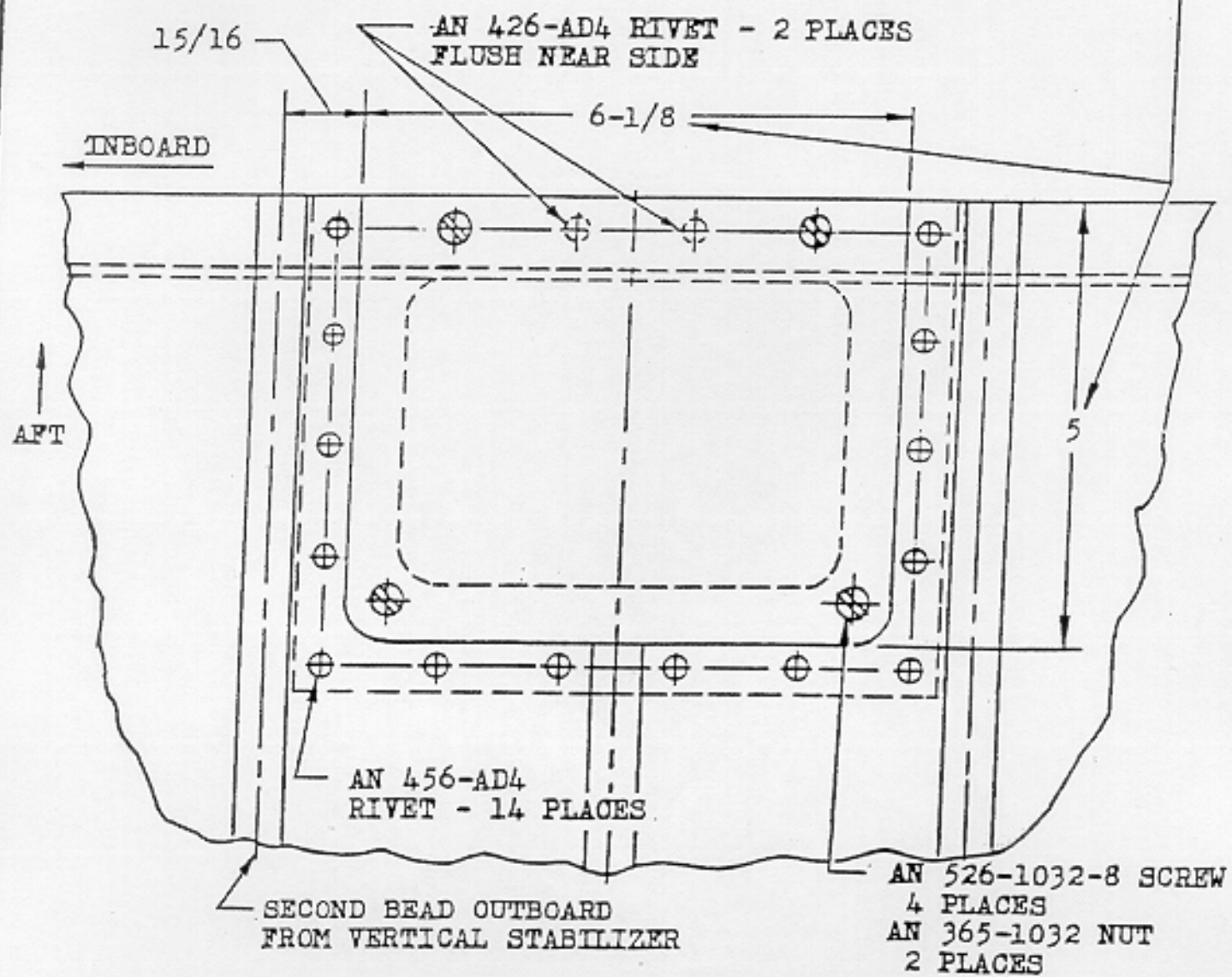
DOOR MATERIAL - ALUMINUM ALLOY SHEET



FRAME MATERIAL - ALUMINUM ALLOY SHEET



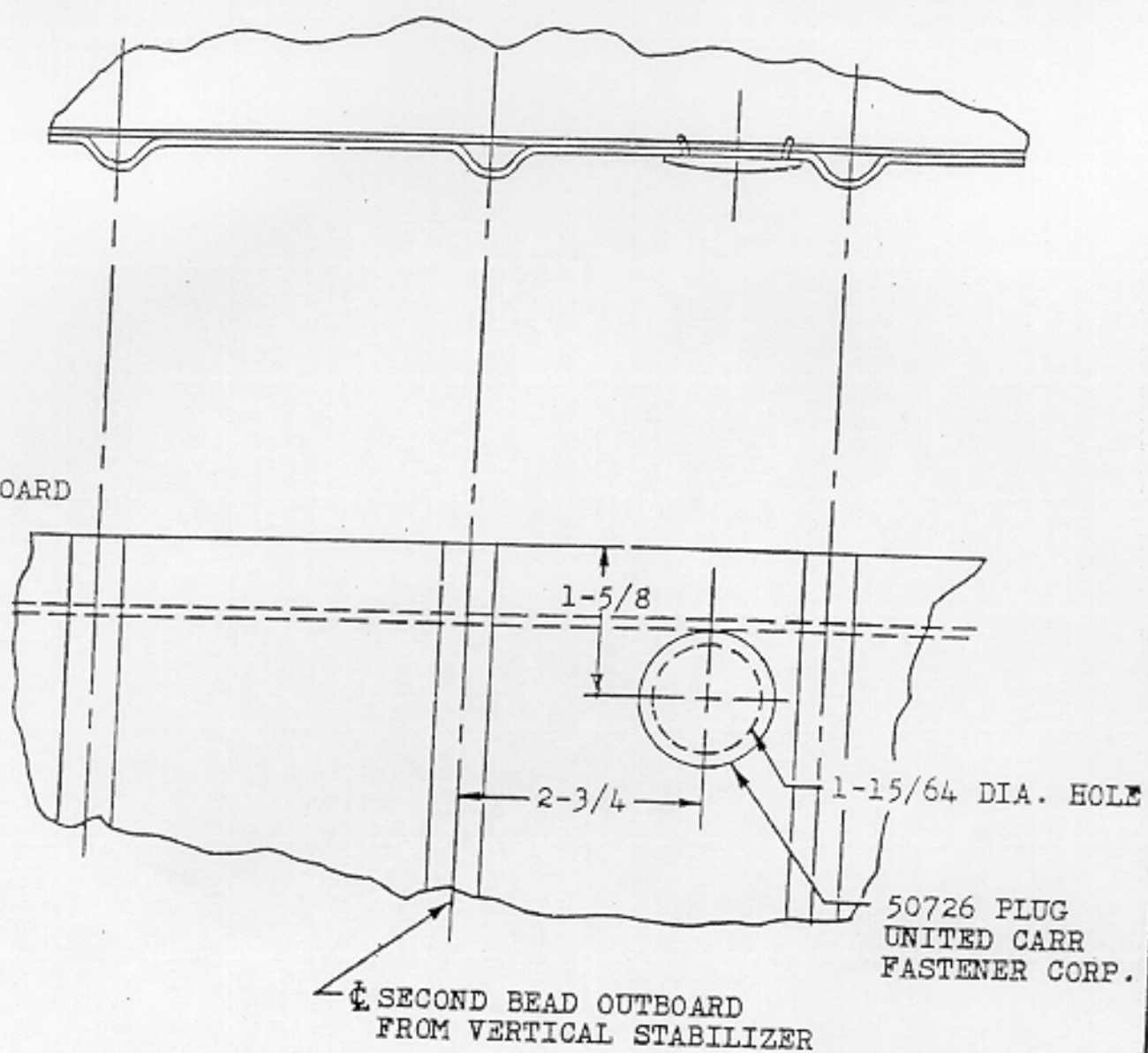
SKIN LAPS — DIMENSIONS SHOW CUT-OUT IN SKIN FOR DOOR



RIGHT HAND HORIZONTAL STABILIZER - VIEW LOOKING UP
LEFT HAND OPPOSITE

← INBOARD

↑
AFT



RIGHT HAND HORIZONTAL STABILIZER - VIEW LOOKING UP
LEFT HAND OPPOSITE