



SERVICE NEWS

AIRCOOLED MOTORS INC.

SYRACUSE 8, NEW YORK

Date: 11/1/49

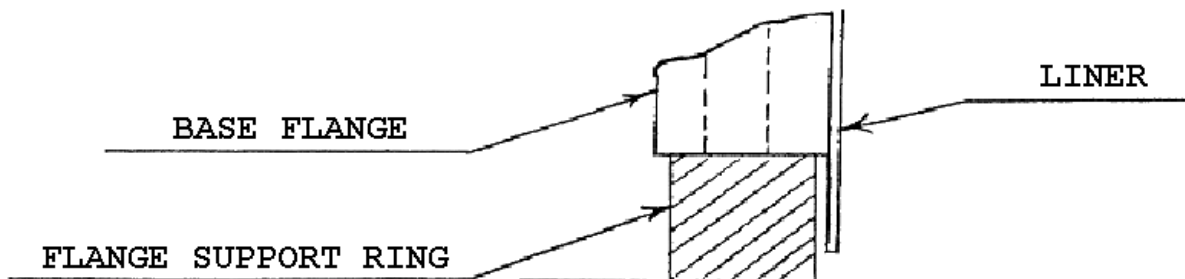
No. FSN 4

**SUBJECT: FRANKLIN AIRCRAFT ENGINE CYLINDER RECONDITIONING MODELS
6A4-150, 6A4-165, 6V4-178 AND 6A8-215**

We have received reports to the effect that cylinders covering the above model engines are not being properly supported in some cases when valve guides are installed in the field as replacement due to removal of worn guides.

When valve guides are installed, after heating the cylinder in accordance with instructions in the Service Manuals, the cylinders should be supported on the base flange section and not on the cast iron cylinder liner.

Supporting the cylinder base flange on a steel ring thick enough to prevent the liner from taking any load will prevent the liner from moving up into the cylinder. See Sketch Below.



Please be sure that your service people are informed regarding proper method of installing valve guides.