

Part Numbers

MS28775-12 or AN6227B-7

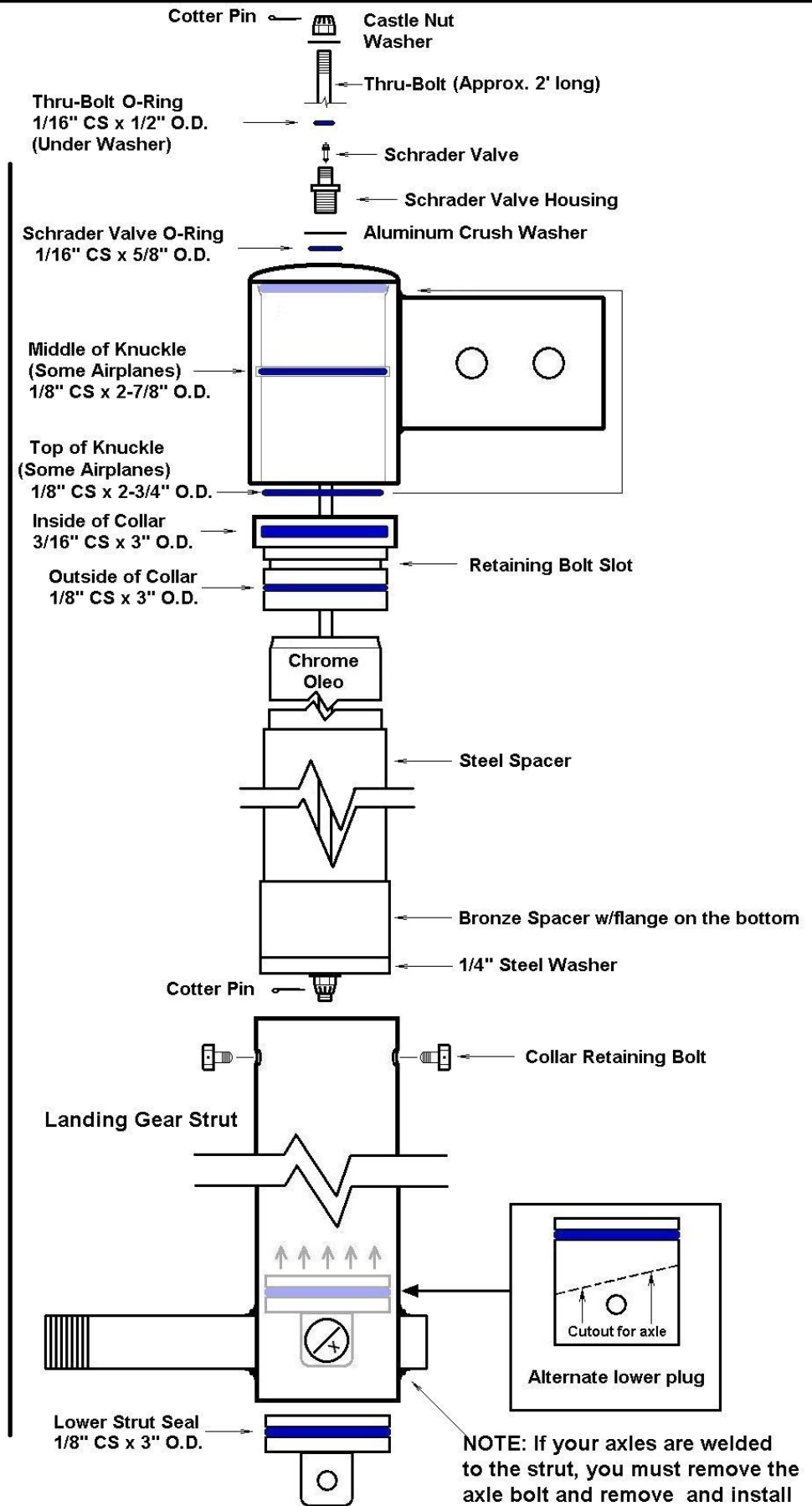
MS28775-14

MS28775-231 or AN6230B-9

MS28775-230 or AN6230B-8

MS28775-334 or AN6227-37

MS28775-232 or AN6230B-10



NOTE: If your axles are welded to the strut, you must remove the axle bolt and remove and install the lower seal from the TOP of the strut! Use an old broomstick or a wooden dowel as a punch from the bottom of the strut.

Landing Gear Strut O-Ring Detail
(O-Rings hi-lighted in BLUE for clarity)

NOT TO SCALE