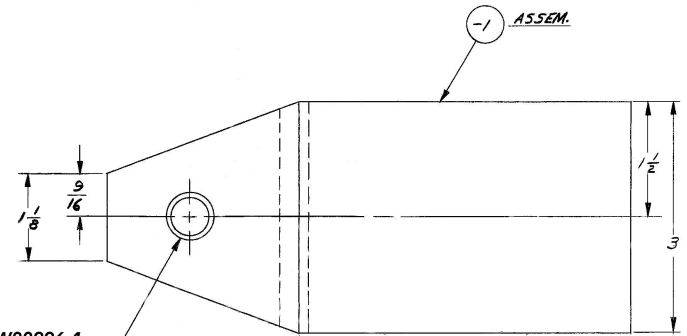
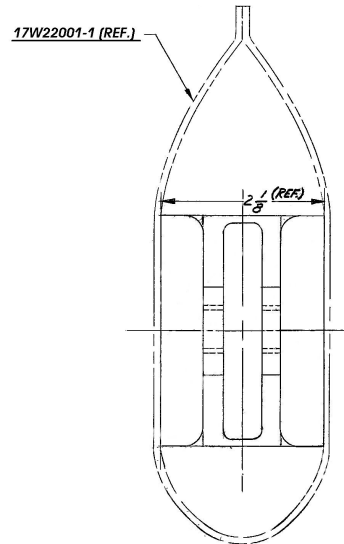
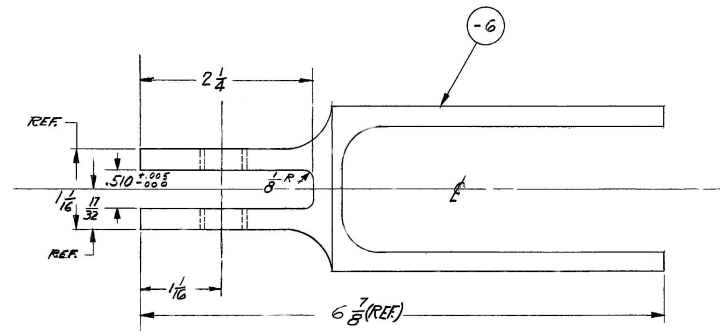


SYT. ON PLANE NOS.	LET.	REVISIONS	DATE	CHECK	APPR.	CUST. APPR.
	A	REMOVED SECTION REAM IN-C FOR BUSHING	12-18			PRM



17W22006-1
REAM - 6
FOR PRESS FIT. - AFTER
INSERTING BUSHING REAM .499 ±.001

17W22003
A

NO. REQ. PER UNIT	PART NO.	ZONE	NAME	DIA.	THICK	WIDTH	LENGTH	MATERIAL	MATERIAL SPEC.	T. S. 1000 PSI	CALC. WT.	AST. WT.
2	17W22006-1		BUSHING									
1	-6		FITTING-MAKE FROM EX. S-550	3/8				AL AL. 245T				
-1	17W22003-1		ASSEM.								1.47	
			ASSEMBLIES									

UNLESS OTHERWISE NOTED		
TOLERANCES:	FRACTIONAL:	DECIMAL:
	± 1/32	NOTED
RADI:	BEND	CORNER
	BEND RELIEF	
MACHINE FINISH DESIGNATIONS	③ SMOOTH MACHINE	④ SMOOTH GRIND
	④ ROUGH MACHINE	⑤ ALL OVER
DRAWN	CHECK	STRUCT.
SLABY 1-7-46	PERVIERE R. 1-2-46	OR. ENG. 1-2-46
STD.	PROJ.	
1-2-46	1-2-46	
HEAT TREAT:		
FINISH: RE-F-12		

DRAWING, DESIGN AND OTHER DISCLOSURES PROPERTY OF REPUBLIC AVIATION CORPORATION FARMINGDALE, L. I., NEW YORK UNAUTHORIZED USE, MANUFACTURE OR REPRODUCTION IN WHOLE OR IN PART IS PROHIBITED	
FITTING ASSEM. WING LIFT STRUT-LOWER	
SCALE (UNLESS NOTED) FULL	SIZE 17W22003